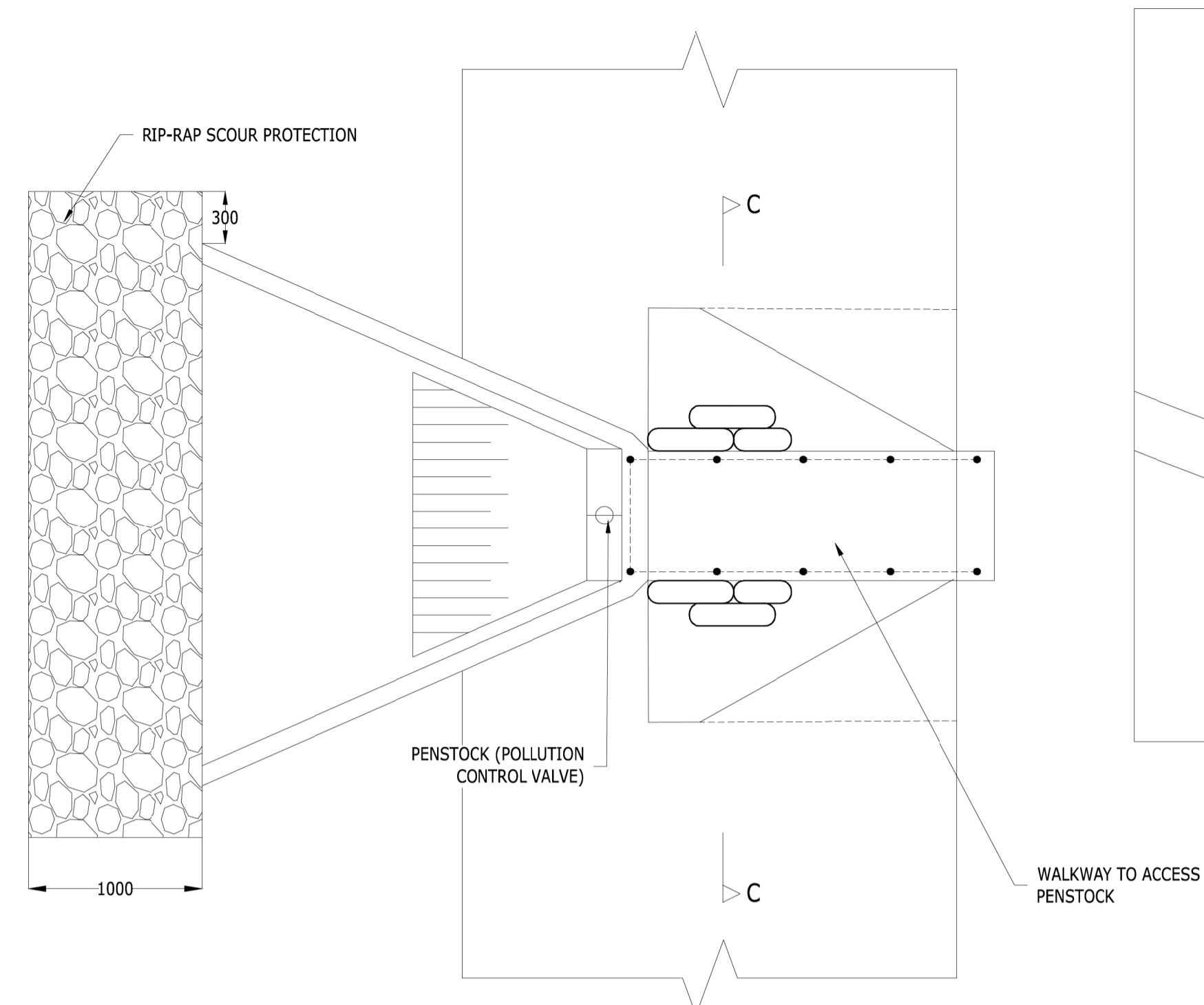
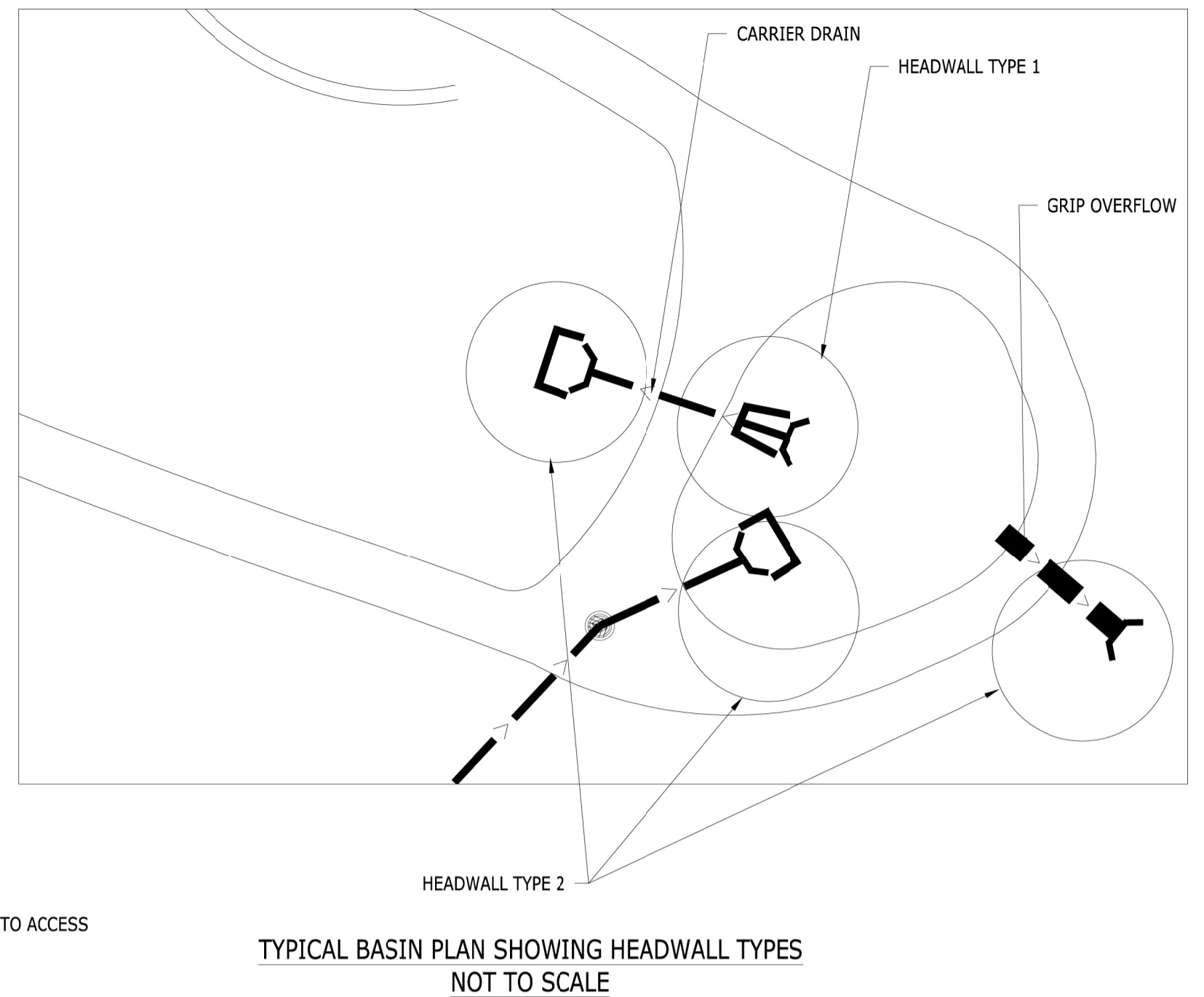


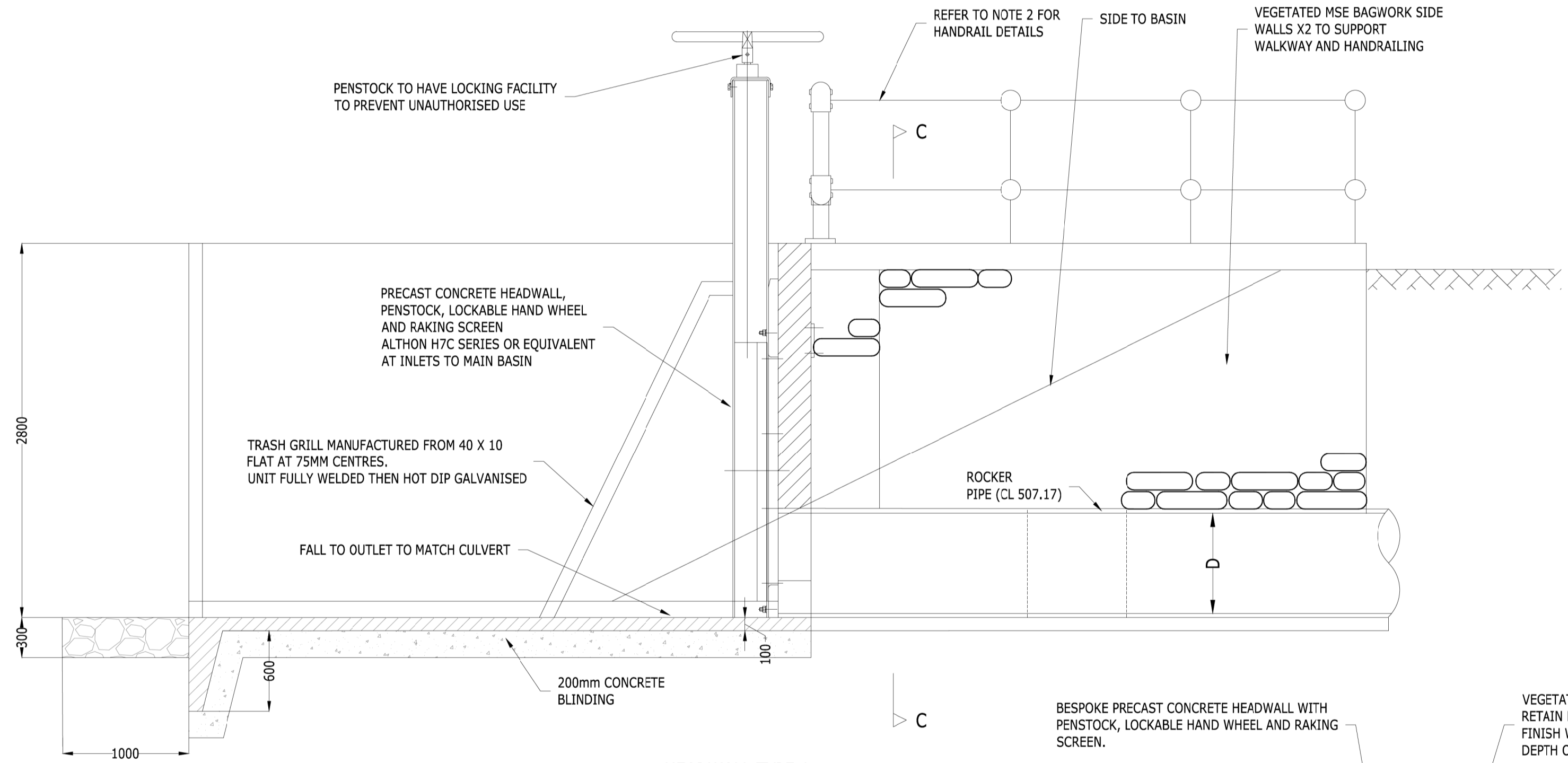
HEADWALL TYPE 1: FLEX MSE BAGGED HEADWALL
PLAN B DETAIL AT BASIN INLET
SCALE 1:30



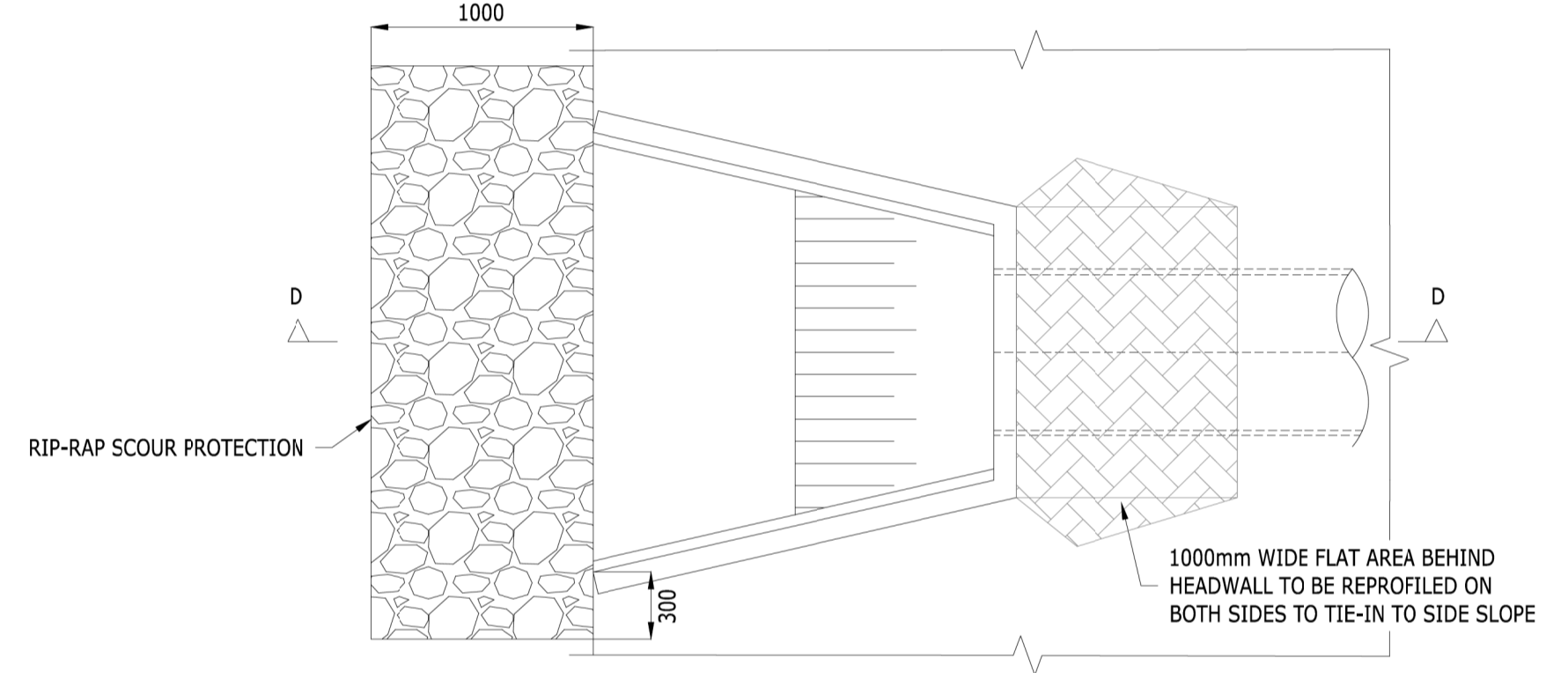
HEADWALL TYPE 1
PLAN C
SCALE 1:30



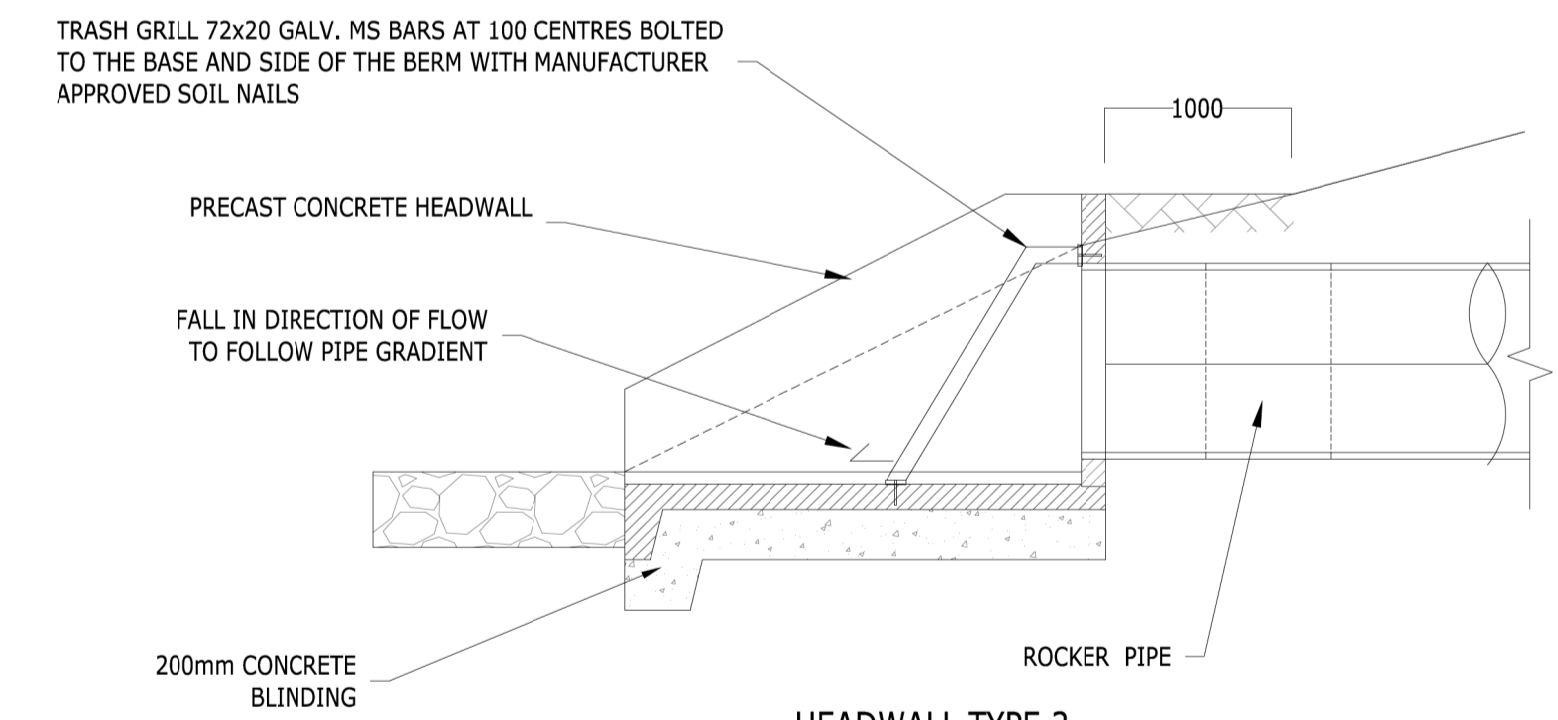
TYPICAL BASIN PLAN SHOWING HEADWALL TYPES
NOT TO SCALE



HEADWALL TYPE 1
SECTION A-A
SCALE 1:30

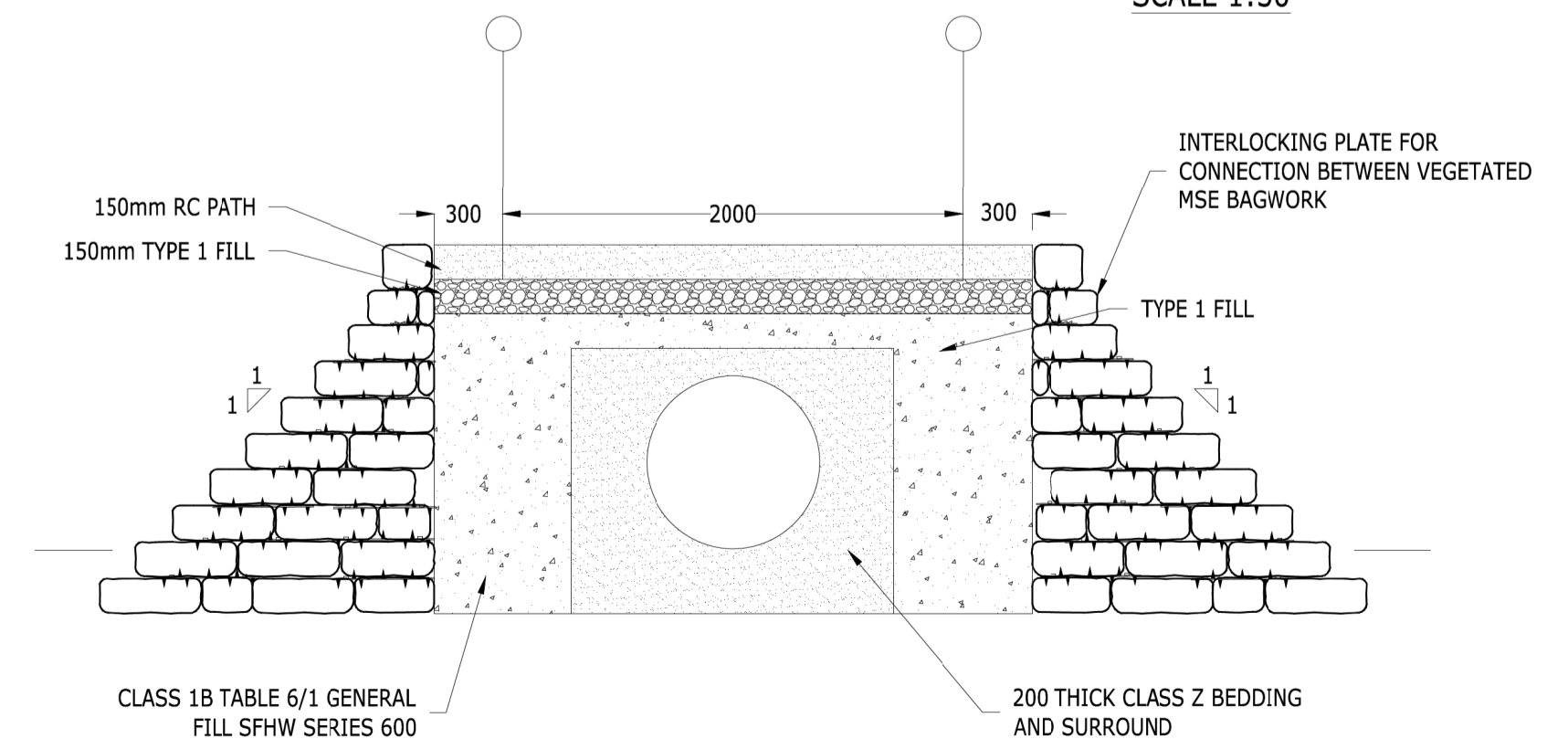


HEADWALL TYPE 2
PLAN D
SCALE 1:30

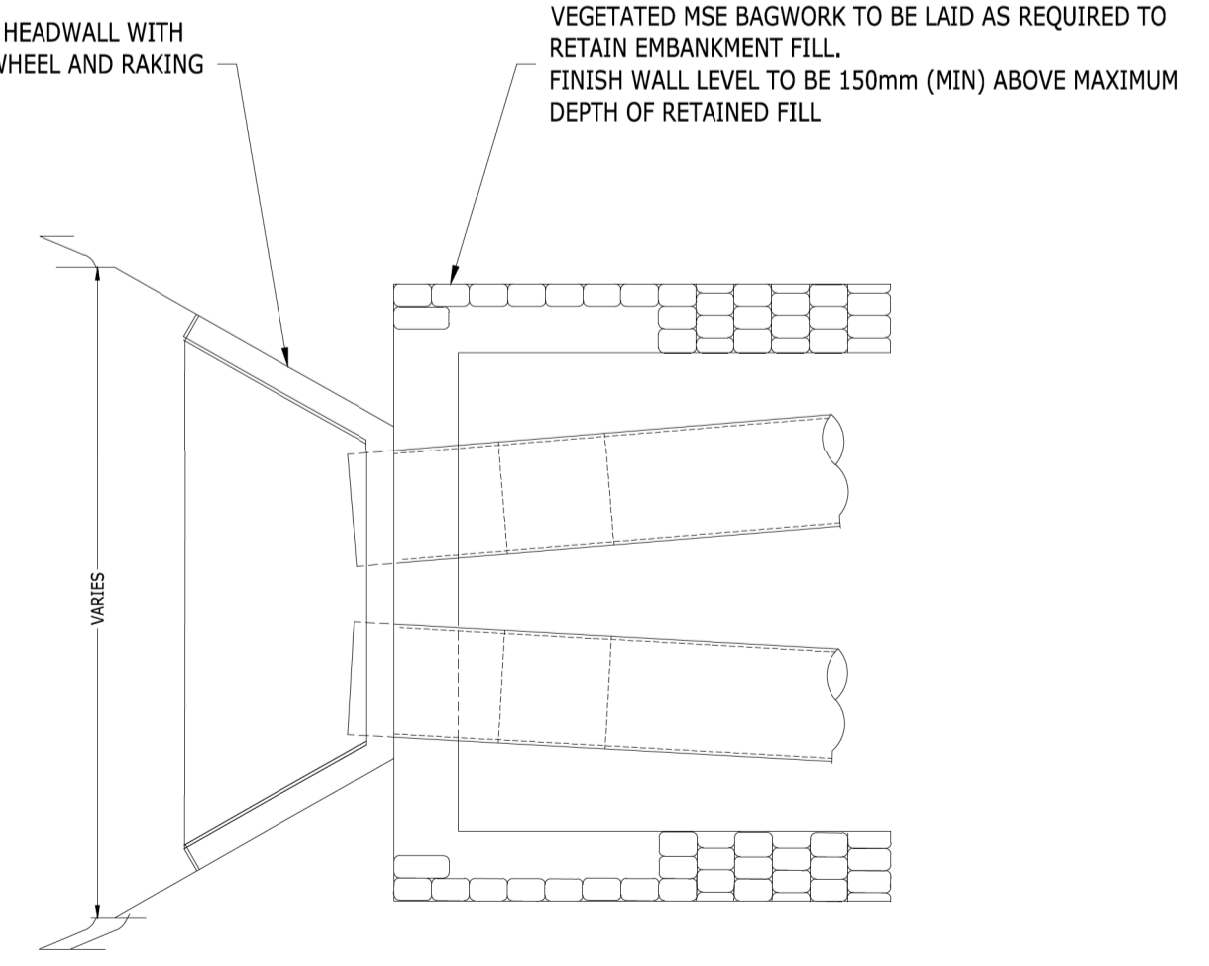


HEADWALL TYPE 2
SECTION D-D
SCALE 1:30

HEADWALL TYPE 2 PRE-CAST CONCRETE HEADWALL
TYPICAL ARRANGEMENT. SIZE TO SUIT PIPE DIA AND WALL HEIGHT



HEADWALL TYPE 1
SECTION C - C
SCALE 1:30



HEADWALL TYPE 1 MODIFICATION
FOR DOUBLE PIPES (BASINS 2 & 5)
SCALE 1:30

Notes:
 1. All dimensions are in millimetres unless otherwise stated.
 2. Please refer to 3.03.00 Environmental Statement Chapter 3: Description of Scheme for the Rochdale Envelope flexibility included within the design for the purposes of Environmental Impact Assessment.
 3. This drawing is for planning application purposes only, it is not a construction issue drawing.

Mapping reproduced by permission of Ordnance Survey on behalf of HMSO.
 © Crown copyright and database rights 2024 Ordnance Survey 100019340.

A1 - Authorised for Planning				
C01	AJ	KJ	SS	08/02/24
REVISION	DRAWN	CHECKED	APPROVED	DATE

CLIENT
Norfolk County Council
 Graham Bygrave
 Interim Executive Director of Community and Environmental services
 Norfolk County Council
 County Hall, Martineau Lane
 Norwich NR1 2SG



DRAWING TITLE
 NORWICH WESTERN LINK
 DRAINAGE TYPICAL DETAILS
 SHEET 2 OF 6

DRAWING STATUS
 A1 - AUTHORISED FOR PLANNING

DRAWN	CHECKED	APPROVED	AUTHORISED
AJ	KJ	SS	FQC
SCALE @ A1 SIZE		DATE	REVISION
AS SHOWN		08/02/24	C01

DRAWING NUMBER
 PK1002-RAM-HDG-MLE-DE-DZ-0002